



Module Name	AB7000 & AB7701	Project No	
Document ID	-	Revision	1.00
Issued by	Patrik Lansdorf	Date	2005-11-28
Subject	Appl. note for ABC-PDP and Anybus-X Serial server	Approved by	Martin Falkman
		Page	1(10)

# ABC-PDP and ABX-Serial server

## Application Note

### Rev. 1.00

---



**About this application note:**

This application note describes how to configure an Anybus-X Serial Server together with an ABC-PDP module. The contents describe step by step how to setup the system.

This document assumes that the reader is familiar with industrial communication, Profibus networks and HMS Gateways.



Module Name	AB7000 & AB7701	Project No	
Document ID	-	Revision	1.00
Issued by	Patrik Lansdorf	Date	2005-11-28
Approved by	Martin Falkman	Page	2(10)

Subject  
Appl. note for ABC-PDP and Anybus-X Serial server

## History

Revision	Date	Description	Responsible
1.00	2005-11-28	Created	Patrik Lansdorf



Module Name	AB7000 & AB7701	Project No	
Document ID	-	Revision	1.00
Issued by	Patrik Lansdorf	Date	2005-11-28
Approved by	Martin Falkman	Page	3(10)

Subject  
Appl. note for ABC-PDP and Anybus-X Serial server

## Contents

<b>1</b>	<b>Requirements</b> .....	<b>4</b>
<b>2</b>	<b>System configuration</b> .....	<b>5</b>
2.1	Software configuration.....	6
2.1.1	Configuring the IP address on the Serial server.....	6
2.1.2	Configuring the Serial/IP.....	7
2.1.3	Web functions.....	8
<b>3</b>	<b>Testing</b> .....	<b>9</b>
<b>4</b>	<b>List of Figures and Tables</b> .....	<b>10</b>



Module Name	AB7000 & AB7701	Project No	
Document ID	-	Revision	1.00
Issued by	Patrik Lansdorf	Date	2005-11-28
Approved by	Martin Falkman	Page	4(10)

Subject  
Appl. note for ABC-PDP and Anybus-X Serial server

## 1 Requirements

Description	Name / Type
Anybus Communicator for Profibus	AB7000 / ABC-PDP
Anybus-X Serial server	AB7701
Power supply 24V DC	N.a.
Configuration cable for Anybus Communicator	017620
Serial/IP Com port redirection software	4.2.4 or later
Anybus IPConfig utility	1.1 or later
ABC config Tool	2.14 or later



Module Name	AB7000 & AB7701	Project No	
Document ID	-	Revision	1.00
Issued by	Patrik Lansdorf	Date	2005-11-28
Approved by	Martin Falkman	Page	5(10)

Subject  
Appl. note for ABC-PDP and Anybus-X Serial server

## 2 System configuration

Below you find an overview of the system configuration that is described in this document.

Other devices may be attached to the Serial server, but since the scope of this application note is to use one Anybus Communicator, only the configuration below will be explained.

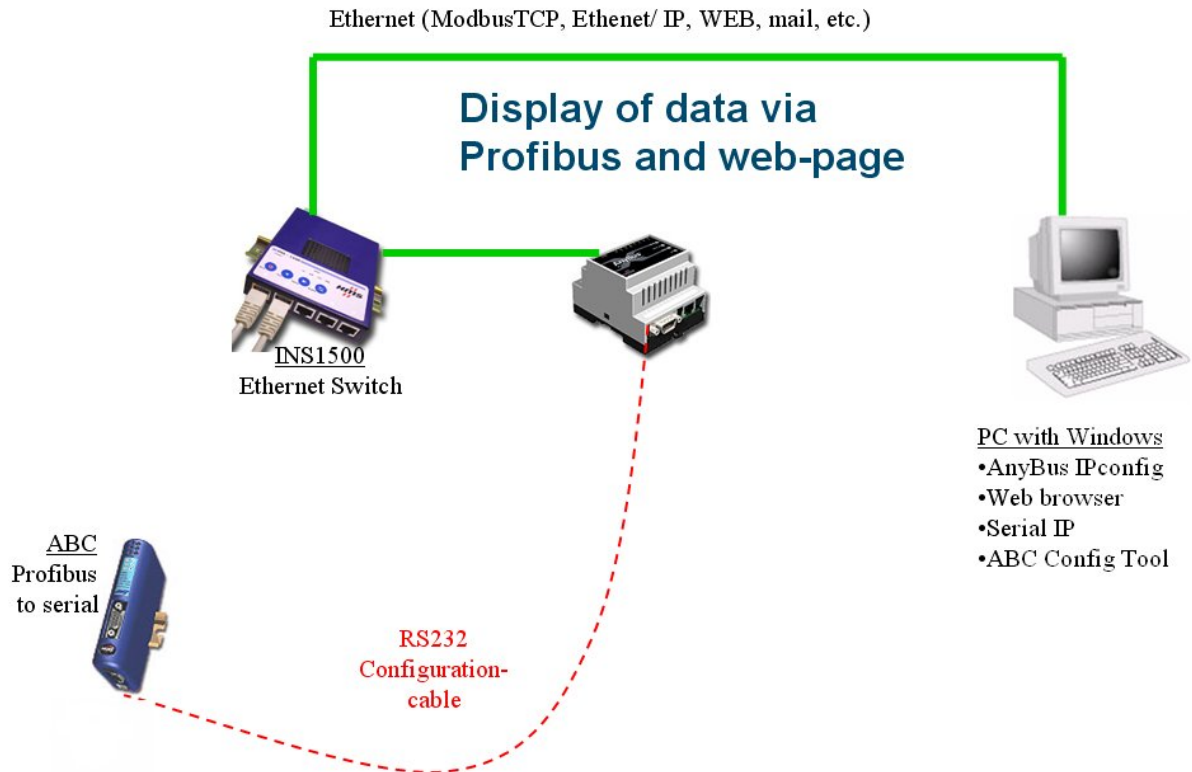


Figure 1. Hardware connection overview

In this application it will be possible to download a configuration to the Anybus Communicator and change some settings on the Serial server via the web interface or the Serial/IP Control Panel.



Module Name	AB7000 & AB7701	Project No	
Document ID	-	Revision	1.00
Issued by	Patrik Lansdorf	Date	2005-11-28
Approved by	Martin Falkman	Page	6(10)

Subject  
Appl. note for ABC-PDP and Anybus-X Serial server

## 2.1 Software configuration

### 2.1.1 Configuring the IP address on the Serial server

After installing the Anybus IPconfig software and connecting the Serial Server to the network, it should be possible to see the module in the Anybus IPconfig tool, as shown below.

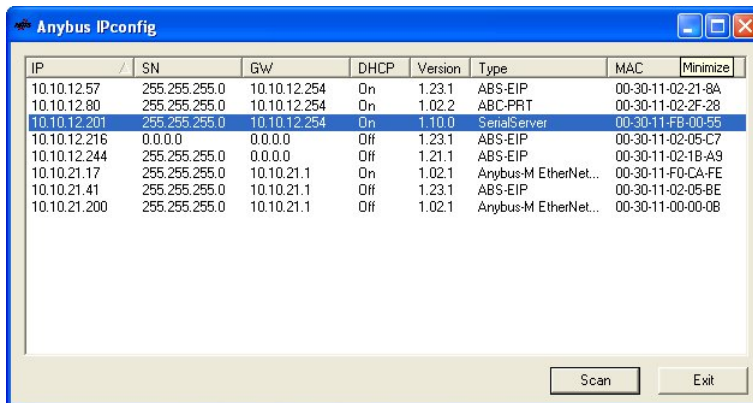


Figure 2. IPconfig

To change IP address and other settings on the module, double-click on the Serial server in the list.

The following window should appear.

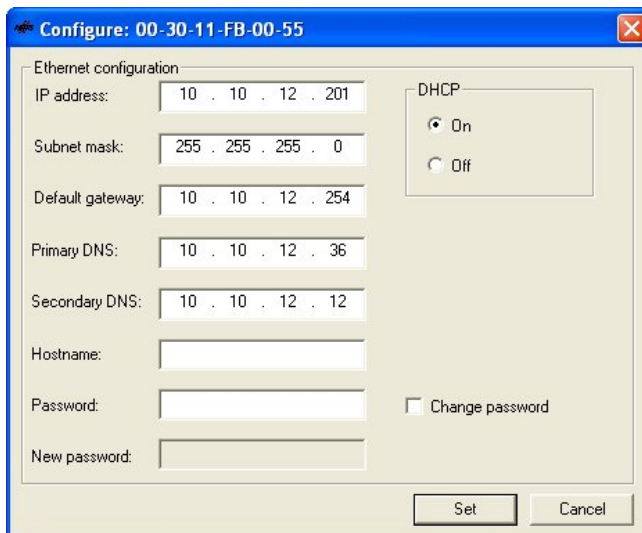


Figure 3. Configure

Make the desired settings and press Set.



Module Name	AB7000 & AB7701	Project No	
Document ID	-	Revision	1.00
Issued by	Patrik Lansdorf	Date	2005-11-28
Approved by	Martin Falkman	Page	7(10)

Subject  
Appl. note for ABC-PDP and Anybus-X Serial server

## 2.1.2 Configuring the Serial/IP

After installing the software Serial\_IP\_Anybus-X\_424b.exe, the following window will appear.

Select which com. port to use, enter IP Address and Port number.

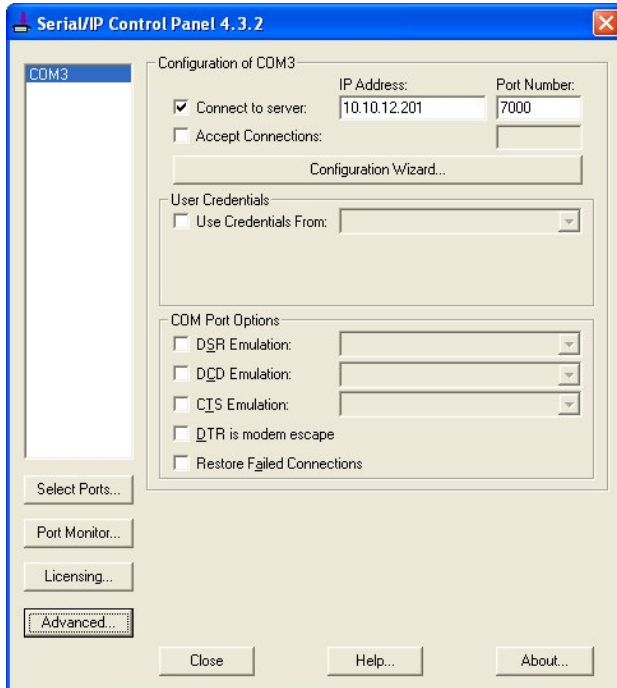


Figure 4. Serial/IP Control Panel

Under the Advanced button there are further settings to be made.

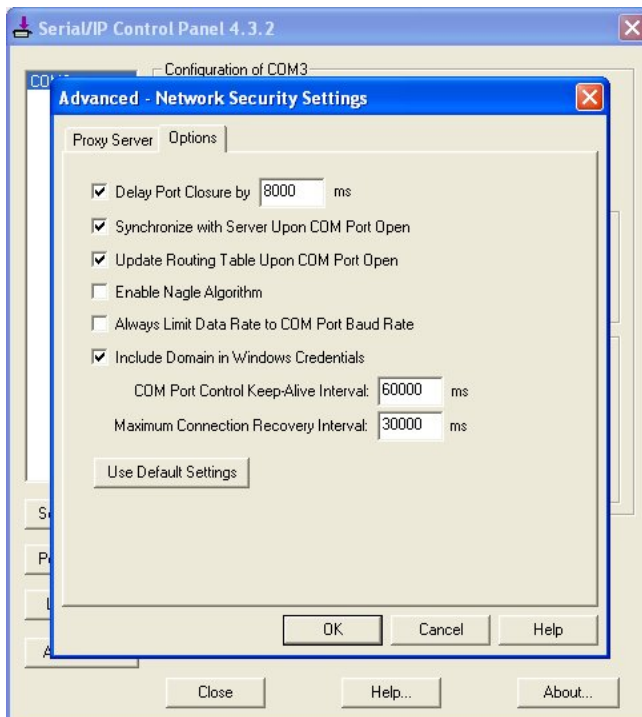


Figure 5. Serial/IP Control Panel



Module Name	AB7000 & AB7701	Project No	
Document ID	-	Revision	1.00
Issued by	Patrik Lansdorf	Date	2005-11-28
Approved by	Martin Falkman	Page	8(10)

Subject  
Appl. note for ABC-PDP and Anybus-X Serial server

The Nagle Algorithm has to be disabled, in order for the Serial Server to be able to work properly together with the Anybus Communicator.

The settings of the Serial IP can always be accessed by right clicking on the Serial/IP, as shown below.



Figure 6 Serial/IP Properties

### 2.1.3 Web functions

The Serial Server can be accessed from the web. Simply type in the configured IP address in the address bar. The default Username and Password is admin.



Figure 7. Log in

The settings that can be altered in the web interface are the same as in the Ipconfig tool, with the addition that port number can also be modified under the Config button.

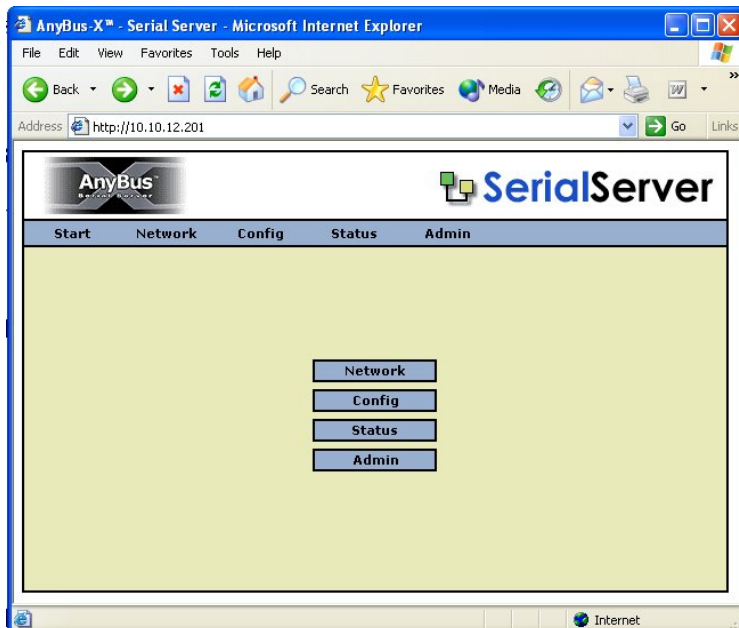


Figure 8. Serial server web interface



Module Name	AB7000 & AB7701	Project No	
Document ID	-	Revision	1.00
Issued by	Patrik Lansdorf	Date	2005-11-28
Approved by	Martin Falkman	Page	9(10)

Subject  
Appl. note for ABC-PDP and Anybus-X Serial server

### 3 Testing

Connect the Anybus Communicator to the Serial server with the configuration cable. Start up the ABC Config Tool and cancel the use of the wizard. Select which communication port to use, as shown in the picture below.

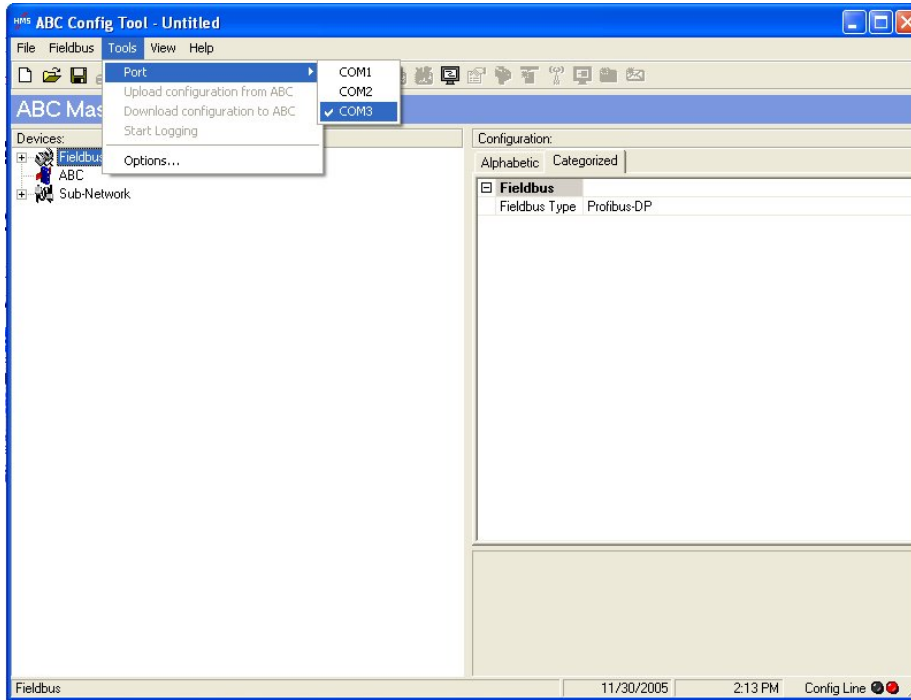


Figure 9. Communication port selection

Press thereafter on the connect button, shown in the picture below.



Figure 10. Connect

It should now be possible to use all functions in the Anybus config Tool as if connected directly to the Anybus Communicator via the standard communication port.



Module Name	AB7000 & AB7701	Project No	
Document ID	-	Revision	1.00
Issued by	Patrik Lansdorf	Date	2005-11-28
Approved by	Martin Falkman	Page	10(10)

Subject  
Appl. note for ABC-PDP and Anybus-X Serial server

More information about the network and products

The latest manuals, software and GSD file can be found on the HMS homepage: [www.anybus.com](http://www.anybus.com)

## 4 List of Figures and Tables

Figure 1. Hardware connection overview .....	5
Figure 2. IPconfig.....	6
Figure 3. Configure .....	6
Figure 4. Serial/IP Control Panel .....	7
Figure 5. Serial/IP Control Panel .....	7
Figure 6 Serial/IP Properties .....	8
Figure 6. Log in.....	8
Figure 7. Serial server web interface.....	8
Figure 9. Communication port selection .....	9
Figure 10. Connect .....	9